



Six Monthly Regional Visitor Arrivals for SPTO Member Countries 2005

Visitor arrivals into SPTO member countries for the first six months of the 2005 have recorded a 3.9 per cent growth over the same period the previous year. 24,300 more visitors travelled to the region in the first six months of 2005 with Papua New Guinea (+20.8 per cent), Vanuatu (+11 per cent) and Fiji (+7.7 per cent) leading the region.

Visitor Arrivals into SPTO Member Countries 2005 (Jan-Jun)

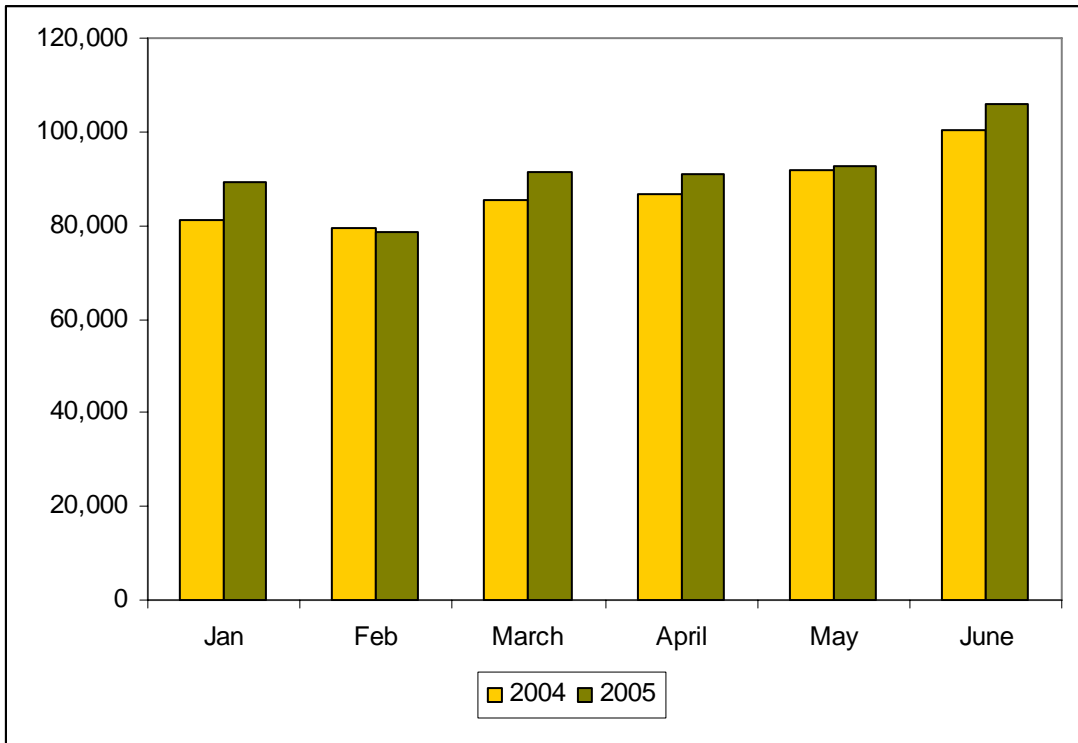
	2004	2005	Change	% change
Cook Islands	36,176	37,746	1,570	4.3
*Fiji	225,741	243,100	17,359	7.7
French Polynesia	98,248	94,843	-3,405	-3.5
Kiribati	1,707	1,325	-382	-22.4
New Caledonia	43,026	44,301	1,275	3.0
Niue	1,138	672	-466	-40.9
Papua New Guinea	29,515	35,651	6,136	20.8
Samoa	44,404	41,871	-2,533	-5.7
*Solomon Islands	2,688	6,114	3,426	127.5
Tonga	17,959	16,882	-1,077	-6.0
Tuvalu	705	527	-178	-25.2
Vanuatu	23,382	25,957	2,575	11.0
Total	524,689	548,989	24,300	4.6

Please note: * 2005 Visitor arrival figures for Fiji are FVB estimates

* 2004 & 2005 Visitor arrival figures for the Solomon Islands are SPTO estimates

The following graph illustrates the monthly breakdown of flow of visitor arrivals in the region.

Visitor Arrivals into SPTO Member Countries 2005



	Jan	Feb	March	April	May	June
2005	89,350	78,776	91,494	90,943	92,600	105,826
2004	80,987	79,362	85,566	86,841	91,636	100,297
Diff.	8,363	-586	5,928	4,102	964	5,529
% change	10.3	-0.7	6.9	4.7	1.1	5.5

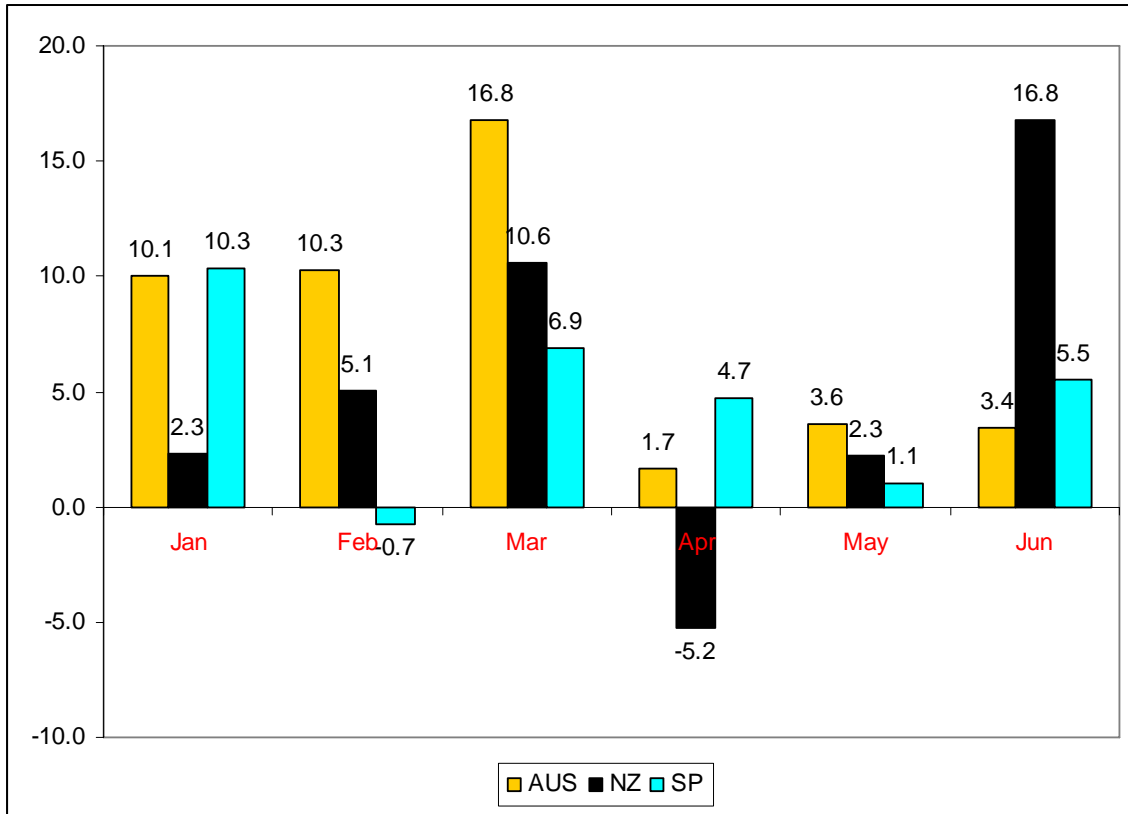
In comparison over the same period in 2004, 2005 in general has seen positive growth over the first six months particularly in January (+10.3 per cent), March (+6.9 per cent) and June (+5.5 per cent). February recorded a 0.7 per cent decline in visitor arrivals compared to that of 2004.

Visitor Arrivals into Oceania Countries 2005, (Jan-Jun)

	2004	2005	Change	% change
Australia	2,418,888	2,611,950	193,062	8.0
New Zealand	1,146,020	1,202,116	56,096	4.9
SPTO Member Countries	524,689	548,989	24,300	4.6

The graph below shows the growth percentage of visitor arrivals into Australia, New Zealand and the South Pacific region over the first six months of 2005 compared to the same period in the previous year.

Visitor Arrival Growth (%)

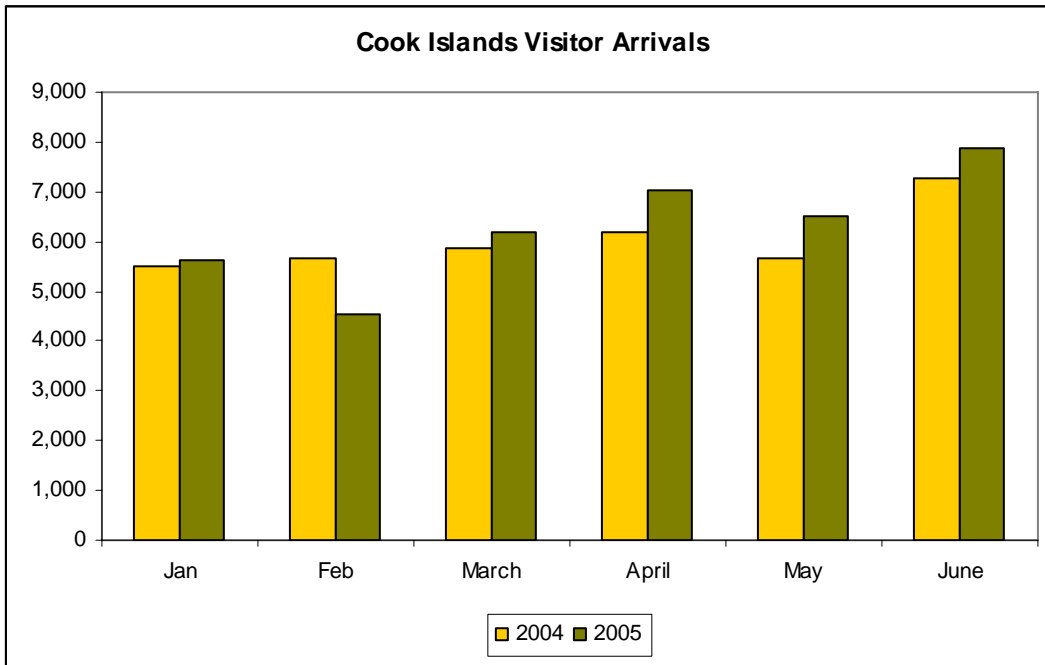


Australia led the Oceania region in visitor arrival growth for the first six months of 2005. Visitor arrivals to Australia increased by 12.4 per cent in the first quarter compared to New Zealand (+5.8 per cent) and SPTO member countries (+5.6 per cent). Second quarter visitor arrivals saw SPTO member countries (+3.8 per cent) edge out New Zealand (+3.5 per cent) in visitor arrival growth. Australia also recorded a positive 2.8 per cent increase in visitor arrivals in the second quarter of 2005.

SPTO Member Country Breakdown

The Cook Islands

The following graph illustrates visitor arrivals to the Cook Islands for the first six months of 2005.

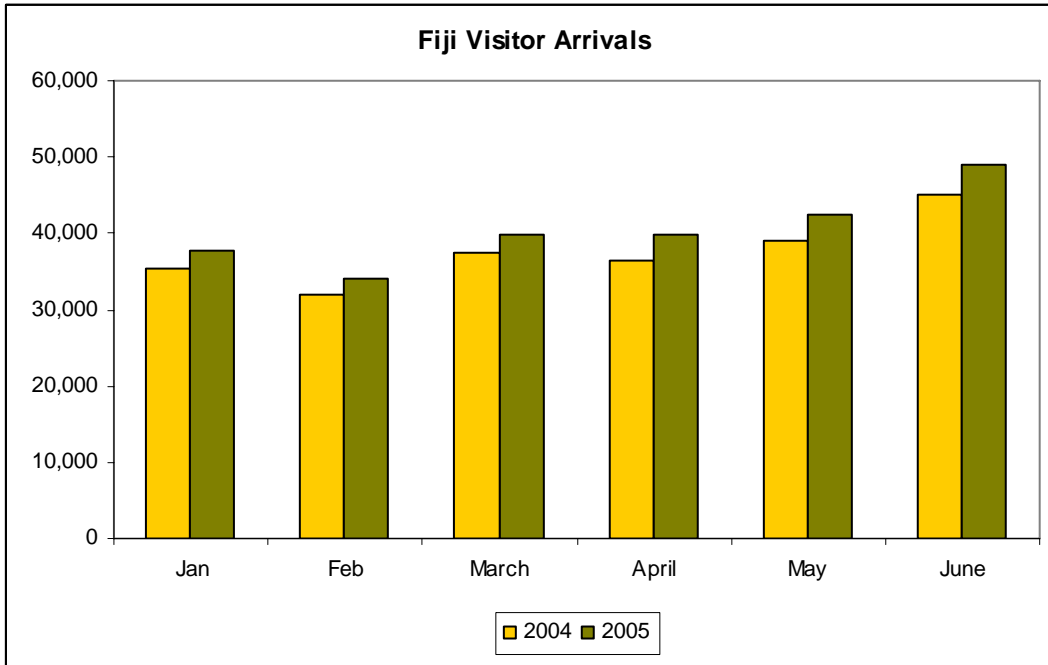


	Jan	Feb	March	April	May	June
2004	5,520	5,674	5,873	6,182	5,646	7,281
2005	5,629	4,535	6,191	7,035	6,501	7,855
% change 05	2.0	-20.1	5.4	13.8	15.1	7.9

Over the first six months of 2005, visitor arrivals to the Cook Islands recorded positive growth compared the same period in 2004, with the exception of February where a drop of 1,139 visitor arrivals (-20.1 per cent) was noticed. Highest visitor arrival growth months were April (+13.8 per cent) and May (+15.1 per cent). In general, total visitor arrivals for this six month period saw a 4.3 per cent growth or 1,570 more visitor arrivals to the Cook Islands than in 2004.

Fiji Islands

The following graph illustrates visitor arrivals to Fiji for the first six months of 2005.



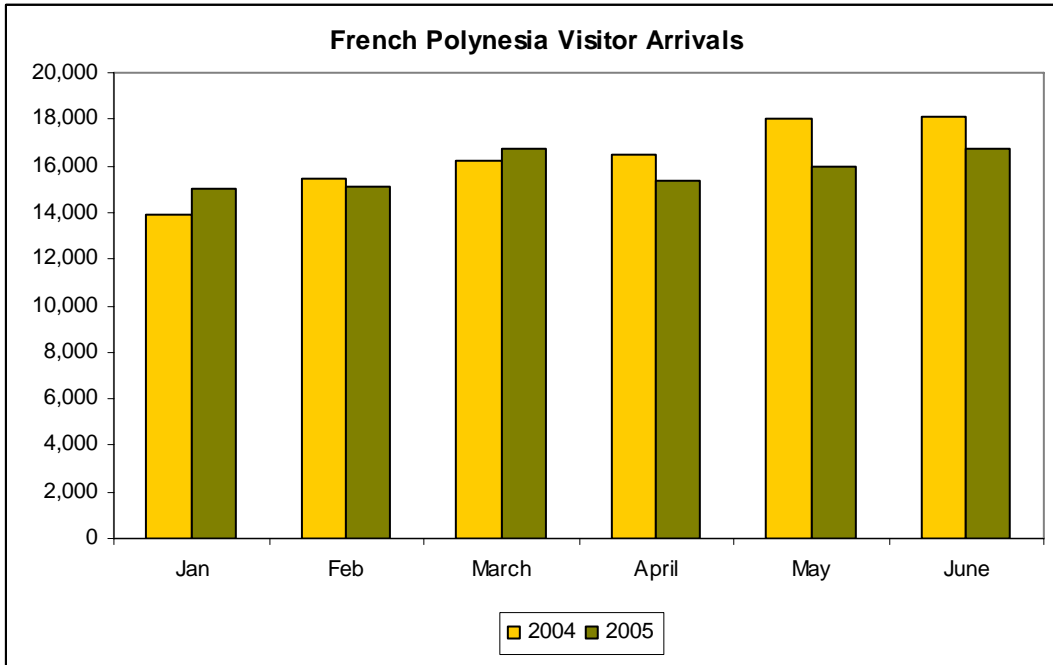
	Jan	Feb	March	April	May	June
2004	35,486	32,072	37,497	36,460	39,058	45,168
2005	37,795	34,085	39,905	39,840	42,365	49,110
% change 05	6.5	6.3	6.4	9.3	8.5	8.7

note: 2005 visitor arrival figures are FVB estimates

Fiji Visitors Bureau has estimated that visitor arrivals to Fiji for the first six months have recorded positive growth for 2005, particularly in the second quarter. The month of April was estimated to have recorded the highest growth over this period with a 9.3 per cent increase from the previous year; this was followed by the months of June (+8.7 per cent) and May (+8.5 per cent). The first quarter was also estimated to have had a monthly average growth of 6.4 per cent. Comparing the visitor arrivals for the first six months of 2005 to 2004, an estimated 7.7 per cent growth was recorded for 2005.

French Polynesia

The following graph shows visitor arrivals to French Polynesia for the first six months of 2005.

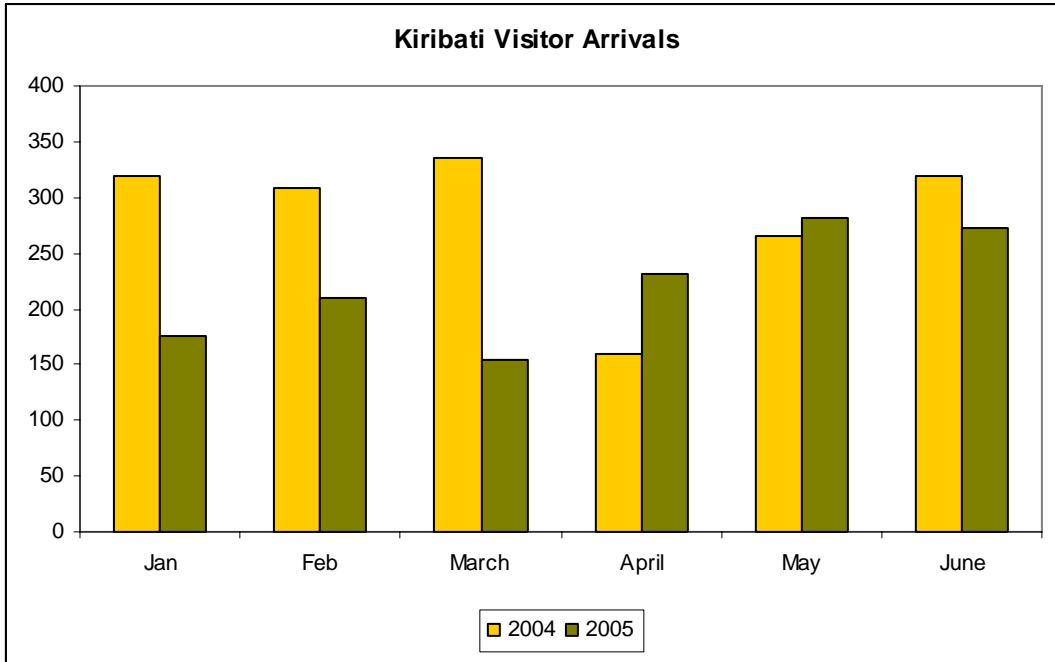


	Jan	Feb	March	April	May	June
2004	13,904	15,438	16,232	16,488	18,045	18,141
2005	15,010	15,106	16,744	15,329	15,950	16,704
% change 05	8.0	-2.2	3.2	-7.0	-11.6	-7.9

French Polynesia recorded a 3.5 per cent decline in visitor arrivals over the first six month period for 2005, indicating 3,405 less visitor arrivals than that of 2004 over the same period. The months of January and March however represented positive growth of 8 per cent and 3.2 per cent respectively.

Kiribati

The following graph shows visitor arrivals to Kiribati for the first six months of 2005.

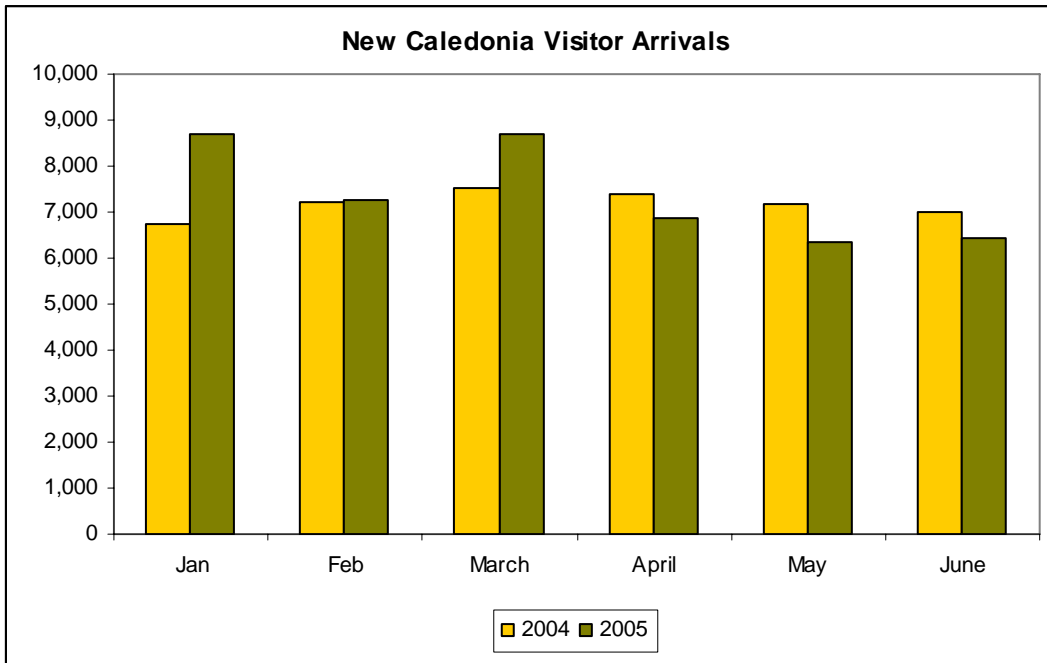


	Jan	Feb	March	April	May	June
2004	320	308	336	159	265	319
2005	175	209	154	232	282	273
% change 05	-45.3	-32.1	-54.2	45.9	6.4	-14.4

Visitor arrivals into Kiribati over the period of January to June 2005 recorded a drop of 382 visitors compared to the same period the previous year. The decline in visitor arrivals was noticed particularly in the first quarter of 2005. Second quarter visitor arrivals were more positive as it represented a 5.9 per cent growth over the same period in 2004.

New Caledonia

The following graph illustrates visitor arrivals to New Caledonia for the first six months of 2005.

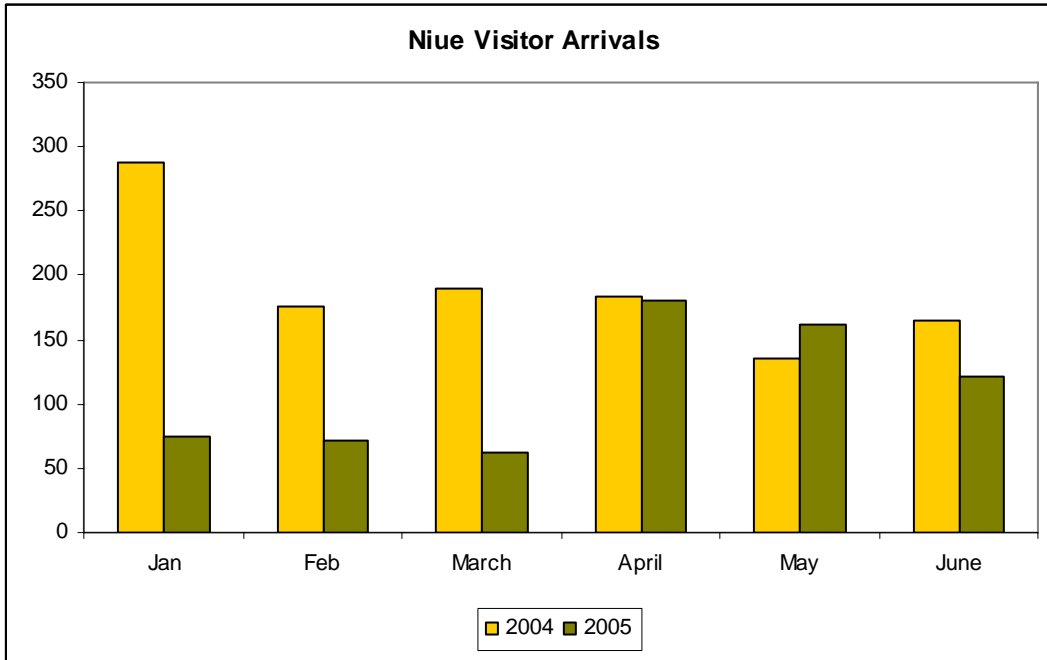


	Jan	Feb	March	April	May	June
2004	6,747	7,213	7,504	7,372	7,184	7,006
2005	8,680	7,274	8,712	6,860	6,361	6,414
% change 05	28.6	0.8	16.1	-6.9	-11.5	-8.4

New Caledonia recorded increase of 1,275 visitor arrivals or 3 per cent growth for the first six months of 2005. This was particularly evident in the first quarter visitor arrivals of the year, second quarter visitor arrivals recorded a decline of 1,927 visitors (-8.9 per cent) over the same period in 2004.

Niue

The following graph shows visitor arrivals to Niue for the first six months of 2005.

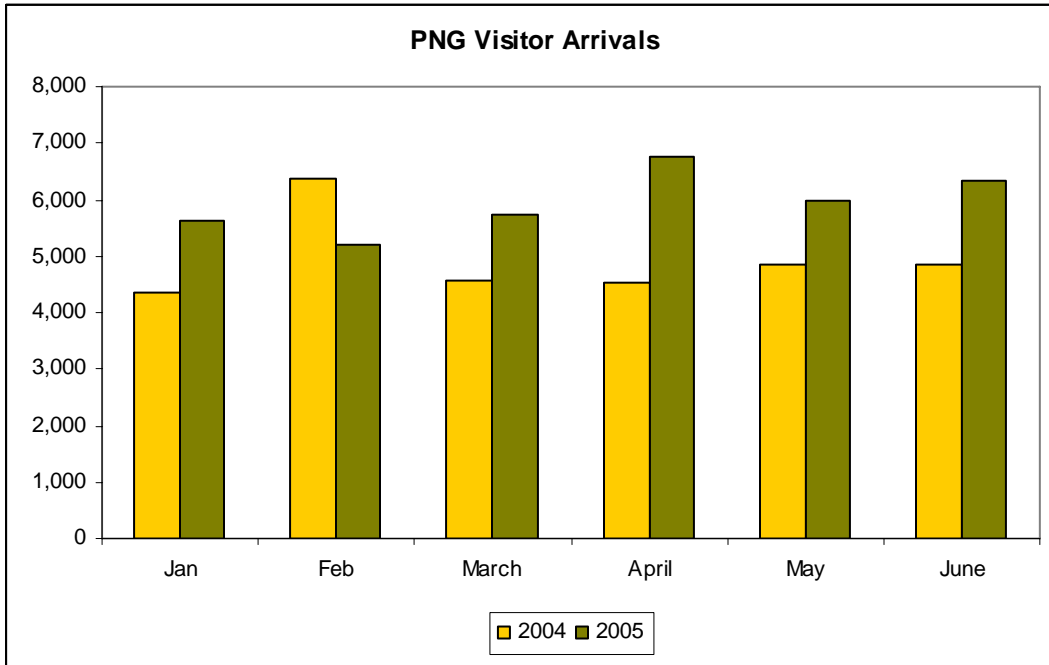


	Jan	Feb	March	April	May	June
2004	288	176	190	184	135	165
2005	75	71	63	181	161	121
% change 05	-74.0	-59.7	-66.8	-1.6	19.3	-26.7

Visitor arrivals to Niue have declined by 466 tourists over the period of January to June for 2005. Only the month of May recorded a 19.3 per cent increase (26 more tourists) with a decline recorded in all other months.

Papua New Guinea

The following graph shows visitor arrivals to Papua New Guinea for the first six months of 2005.

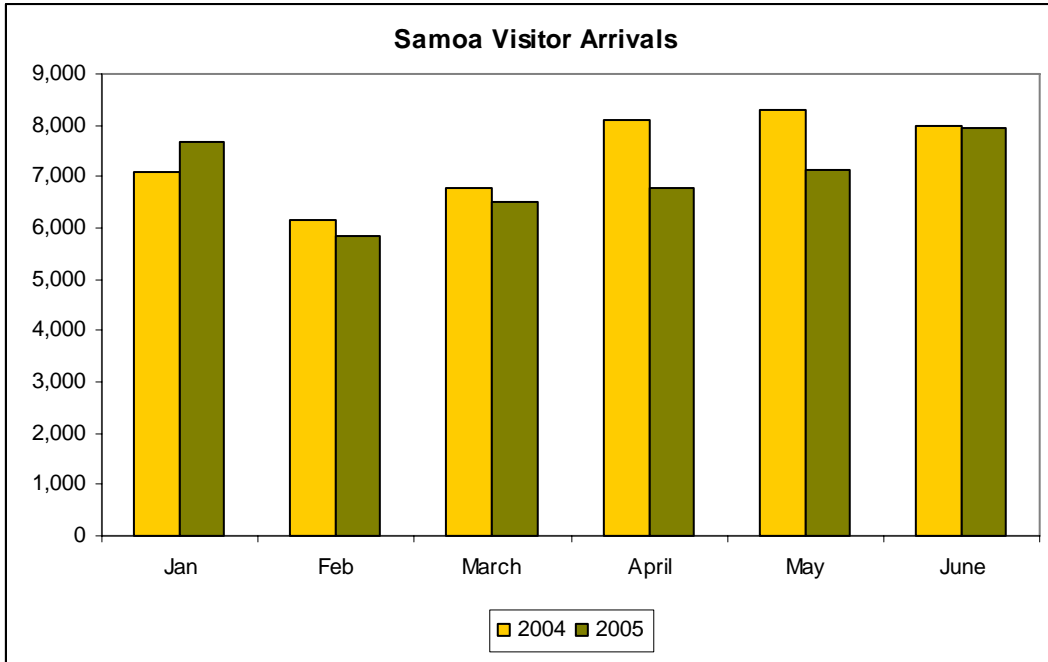


	Jan	Feb	March	April	May	June
2004	4,369	6,371	4,566	4,532	4,838	4,839
2005	5,623	5,208	5,726	6,765	5,988	6,341
% change 05	28.7	-18.3	25.4	49.3	23.8	31.0

Papua New Guinea has recorded positive growth in visitor arrivals for the first six months of 2005. There were 6,136 more tourists travelling to PNG than that of the same period in 2004. The month of April almost recorded a 50 per cent increase over the previous year. Second quarter visitor arrivals 2005 to PNG highlighted a 34.4 per cent growth when compared to second quarter visitor arrivals in 2004.

Samoa

The following graph shows visitor arrivals to Samoa for the first six months of 2005.



	Jan	Feb	March	April	May	June
2004	7,072	6,157	6,771	8,098	8,306	8,000
2005	7,685	5,828	6,497	6,774	7,134	7,953
% change 05	8.7	-5.3	-4.0	-16.3	-14.1	-0.6

Samoa recorded a 5.7 per cent decline in visitor arrivals for the first six months of 2005. There were 2,533 less tourists visiting Samoa when compared to the same period the previous year. First quarter visitor arrivals for Samoa recorded fractional positive growth (+0.05 per cent) while second quarter visitor arrivals saw a drop of 2,543 visitors travelling to Samoa.

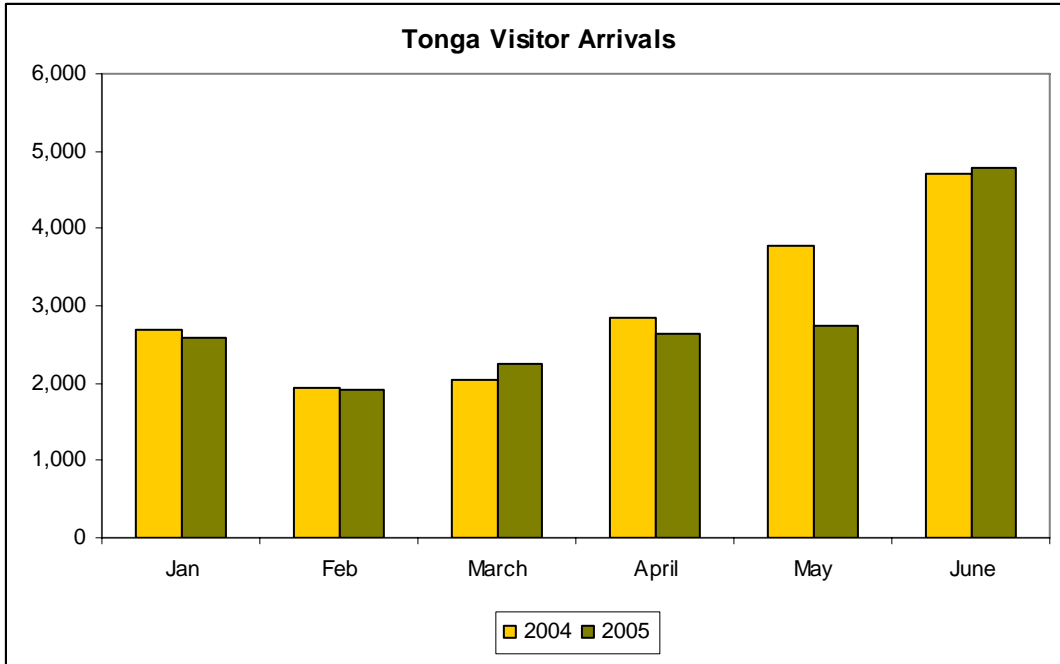
Solomon Islands

SPTO estimates visitor arrivals to the Solomon Islands for the first six months to be **6,114**. This estimate was calculated from information provided by the Solomon Airlines. International airlines that service the Solomon Islands weekly are Solomon Airlines, Air Pacific, Air Niugini and Air Nauru. It was estimated that the seating capacity of the four flights round up to 600 per week; if an average load factor of 70 per cent was considered, there would be around 425 visitors visiting the Solomon Islands per week in which 60 per cent or 255 are thought to be non residents. Through this weekly figure (255) the estimated monthly figure of 1,019 was calculated.

Tourism in the Solomon Islands is looking brighter for 2005 and beyond as operators are starting to experience increased guest numbers in the peak period from June to August this year. Any significant increase in the period from November 2005 to January 2006 would greatly enhance the visitor arrivals to the Solomon Islands. This projection is achievable as Solomon Airlines have just leased an aircraft from Qantas. This would not only boost seat capacity but also give Solomon Airlines more flexibility to possibly increase flights from Brisbane to three per week now that they have sole control over scheduling.

Tonga

The following graph illustrates visitor arrivals to Tonga for the first six months of 2005.

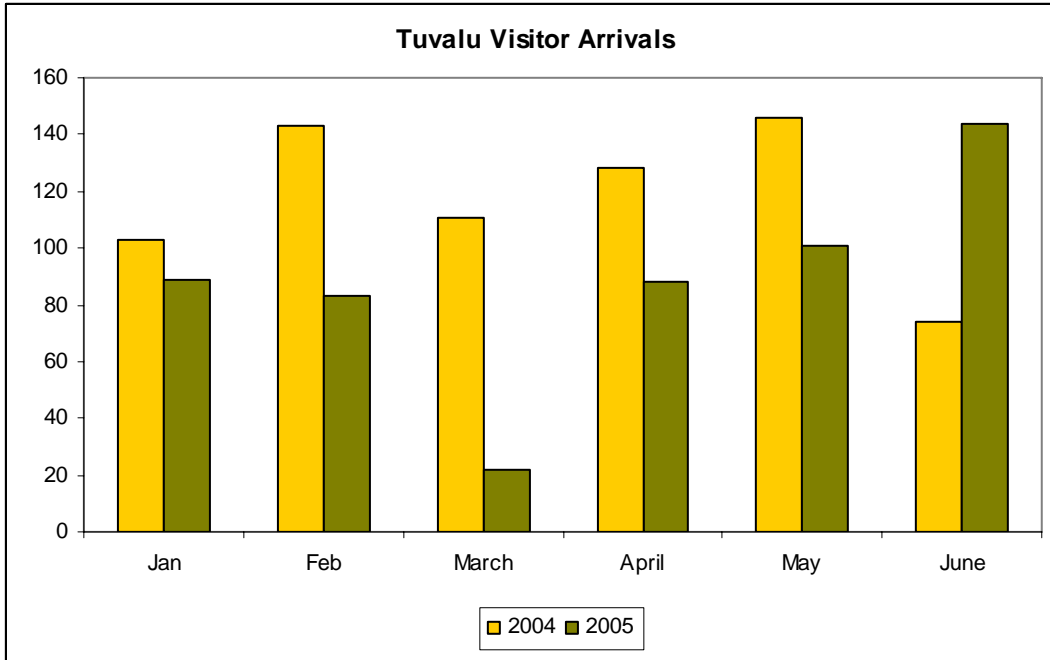


	Jan	Feb	March	April	May	June
2004	2,684	1,933	2,035	2,840	3,771	4,696
2005	2,576	1,918	2,247	2,634	2,730	4,777
% change 05	-4.0	-0.8	10.4	-7.3	-27.6	1.7

Visitor arrivals to Tonga have fallen by 6 per cent for the first six months of 2005. A slight 1.3 per cent growth was recorded for the first quarter visitor arrivals while second quarter visitor arrivals indicated a 10.3 per cent decline. Positive growth was recorded in the months of March (+10.4 per cent) and June (+1.7 per cent).

Tuvalu

The following graph illustrates visitor arrivals to Tuvalu for the first six months of 2005.

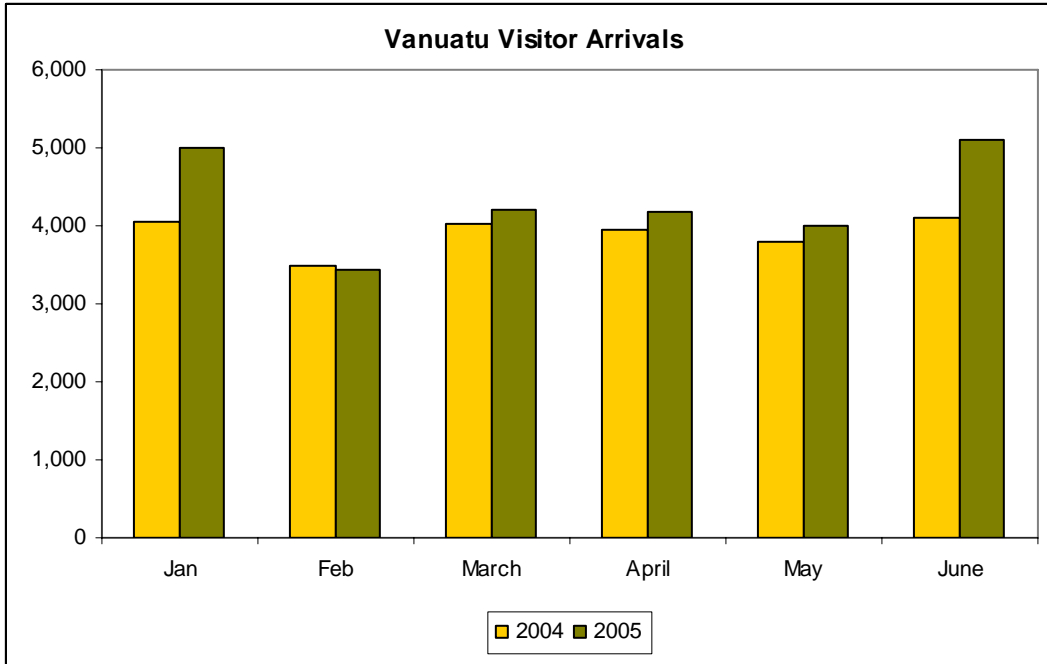


	Jan	Feb	March	April	May	June
2004	103	143	111	128	146	74
2005	89	83	22	88	101	144
% change 05	-13.6	-42.0	-80.2	-31.3	-30.8	94.6

Tuvalu has recorded a drop of 178 tourists travelling into the country for the first six months of 2005. First quarter arrivals highlighted a decline of 163 tourists while a decline of 15 visitors was recorded for the second quarter of 2005.

Vanuatu

The following graph shows visitor arrivals to Vanuatu for the first six months of 2005.



	Jan	Feb	March	April	May	June
2004	4,050	3,479	4,014	3,955	3,793	4,091
2005	4,994	3,440	4,214	4,186	4,008	5,115
% change 05	23.3	-1.1	5.0	5.8	5.7	25.0

Visitor arrivals to Vanuatu for the first six months of 2005 have increased by 11 per cent. Generally, positive growth was recorded throughout the first six months with the exception of February which recorded a drop of 39 tourists. Visitor arrivals to Vanuatu in the first quarter grew by 9.6 per cent and second quarter visitor arrivals grew by 12.4 per cent.